

Rapid SQL® XE

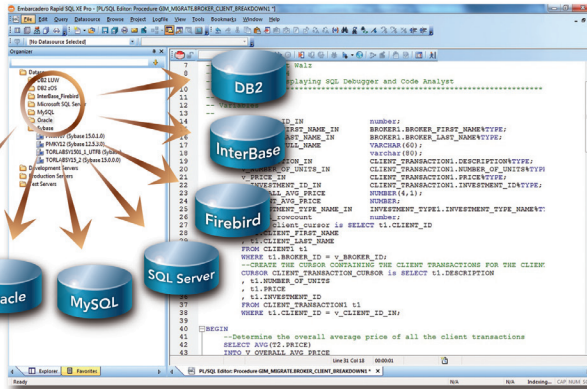
Heterogeneous SQL IDE



Embarcadero® Rapid SQL® XE helps developers and DBAs produce high performance SQL code at lightning speeds. With support for all major database platforms from a single interface, teams can standardize on one powerful heterogeneous SQL IDE tool.

A rich development environment simplifies SQL scripting, query building, object management, project management, and version control in live databases or offline source code repositories. Intuitive SQL editing, debugging, and optimization tools help create high performance SQL code.

- Develop SQL for seven database platforms – from one interface
- Create high-quality code faster
- Support team collaboration and resource sharing, including seamless integration with source control systems
- Increase application developer productivity



Only Rapid SQL XE provides you with a single interface for producing high performance code on all your databases

NEW! RAPID SQL XE: DEVELOP SQL FOR ALL YOUR DBMSes – FROM ONE HETEROGENEOUS TOOL

Rapid SQL XE, the latest generation of the Rapid SQL family of products, allows you to develop on all major DBMS platforms and includes Embarcadero® ToolCloud and InstantOn™, for centralized license management, tool provisioning, and “zero-install” deployment capability.

The Integrated Development Environment (IDE) in Rapid SQL enables developers to create, edit, version, tune, and deploy server-side objects residing on IBM® DB2®, Firebird, InterBase®, Microsoft® SQL Server, MySQL®, Oracle®, and Sybase® databases.

For cross-platform schema development, Rapid SQL's standardized, multi-tabbed, graphical object editors for each database object type allow you to move effortlessly from managing a SQL Server or Sybase schema to managing an Oracle schema, and vice-versa. The product contains full knowledge of the underlying DBMS system catalog, syntax, and alteration rules.

CREATE HIGH-QUALITY SQL CODE IN LESS TIME

The rich visual environment found in Rapid SQL streamlines the task of creating SQL code. Rapid SQL includes visual tools for ad-hoc data editing and simple-to-complex query building. Prevent errors with scripting support features such as syntax checking and auto-complete. Quickly produce code with built-in hot keys, column lookup and code templates.

For code optimization, Rapid SQL provides built-in explain and performance execution analysis as well as cross-platform code debuggers that you can use to troubleshoot server-side code objects.

- A code analyst lets you perform detailed response time analysis on the execution of stored procedures and functions
- The SQL debugger debugs programmable objects such as stored procedures, functions, packages, and triggers
- The SQL profiler captures metrics of various PL/SQL programmable objects on Oracle

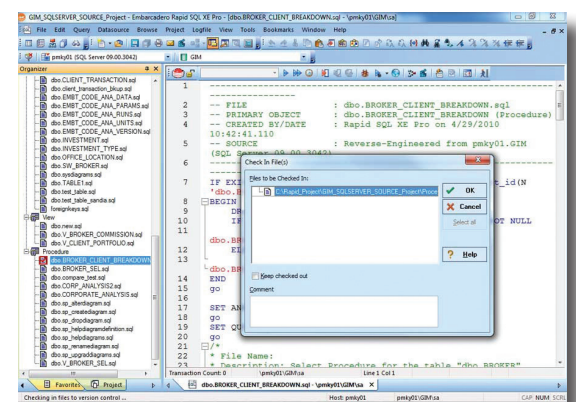
SUPPORT TEAM COLLABORATION AND RESOURCE SHARING

Rapid SQL contains a comprehensive set of features to support team collaboration. Rapid SQL provides seamless integration with most commercial version-control packages. Developers can place projects under a central version control system with just a few mouse clicks. All version control operations, such as get, checkout, check-in, history, and diff are supported. In addition, Rapid SQL enables you to work within an offline SQL source code repository as opposed to coding from live databases. Finally, a powerful reverse-engineering facility can extract a predefined subset of existing objects from a live database into a Rapid SQL project, producing an individual file for each database object.

INCREASE APPLICATION DEVELOPER PRODUCTIVITY

Rapid SQL XE includes Rapid SQL Developer, an Eclipse-based SQL IDE with integrated Java to SQL round-trip debugging. Rapid SQL Developer has numerous validation features that help flag coding errors in real-time at the location of the error. Code assist provides a context-sensitive list of database object names, eliminating the possibility of mistyping or referencing a non-existent object. Streamline coding tasks while producing high-quality code with code templates, explain plans, and on-the-fly tuning.

Comprehensive team code management, including version control operations such as checkout and check-in



Key Features

- Single interface for all major DBMSes
- Graphical object editors
- Wizard-driven object creation
- Extended Alter
- ISQL window with SQL analysis, built-in explain plans and performance execution analysis
- Visual query builder
- SQL Editor
- Version Control
- Reverse-engineering
- Code Analyst
- SQL Debugger

New in Rapid SQL XE

- Support for all seven database platforms included in a single, affordable license
- Go global with full Unicode character and enhanced currency support
- Three new object filtering capabilities
- On-the-fly SQL syntax alerts, semantic validation, and SQL parsing
- Full object look-up throughout the SQL statement
- Code complete with dynamic “walk-throughs”
- Quick export and import of registered data source information
- InterBase® and Firebird support
- Includes Embarcadero® ToolCloud™ and Embarcadero® InstantOn™
- Easy upgrade path to Embarcadero® All-Access™

General Features		Standard	Professional	XE
Common Support	Supports all major DBMSes from a single interface	x	x	x
Unicode Support	Full Unicode character support throughout the application	x	x	x
Intuitive Interface	Automates common and repetitive tasks with easy-to-use SQL editors and wizards	x	x	x
Multi-platform Support	Ability to use the tools on all supported platforms from a single license	Optional	Optional	x
Embarcadero ToolCloud	Enables centralized license management and tool deployment	Optional	Optional	x
Object Support		Standard	Professional	XE
Graphical Object Editors	Create, drop, or alter a wide variety of database objects, including tables, constraints, indexes, views, procedures, functions, triggers, and packages. Editors are common for all objects (across all platforms.)	x	x	x
Wizard-driven Object Creation	Wizards guide users through the creation of objects, prompting for the options that are applicable to objects found on the selected database platforms	x	x	x
Grouped Object Command Execution	Execute database commands against a select grouping of objects (drop, compile, analyze, etc)	x	x	x
Extended Alter Support	Provides the ability to generate complex scripts as a result of object manipulation (inserting a column in the middle of a table)	x	x	x
SQL Scripting and Editing		Standard	Professional	XE
Visual Query Builder	Constructs even the most complicated SQL statements with point-and-click ease	x	x	x
Code Templates	Eliminates the need to memorize and type SQL syntax	x	x	x
SQL Editor	Code folding, code collapse/roll-up, syntax coloring, hot key assignments, configurable auto replace of objects	x	x	x
Context-sensitive DBMS Actions	DBMS actions, such as Extract and Drop, are available directly in the context menu of the appropriate tokens in the SQL editor	x	x	x
Debugging, Performance Optimization		Standard	Professional	XE
Code Analyst	Performs detailed response time analysis on the execution of stored procedures and functions		x	x
SQL Debugger	Debugs programmable objects such as stored procedures, functions, packages, and triggers. Available for DB2 for LUW, Oracle, SQL Server, and Sybase		x	x
SQL Profiler	Captures metrics of various PL/SQL programmable objects on Oracle 8.1.5 and higher.		x	x

Rapid SQL Developer

Rapid SQL Developer is an Eclipse-based SQL IDE that is bundled with all Rapid SQL Editions. Rapid SQL Developer does not include advanced object management or SQL profiling capabilities like Rapid SQL, but offers the following features designed specifically for Application Developers tasked with writing SQL code. Rapid SQL Developer is available as a stand-alone application or an Eclipse plugin.

Feature	Description	Standard	Professional	XE
Advanced Code Assist	Lists context-sensitive suggestions as you type (e.g., tables, columns, procedures, functions, and code templates) and is available offline	x	x	x
Code Formatting and Profiles	Code folding, syntax coloring, comment toggling, and other auto formatting features make it easy to read, navigate, and edit large SQL files. Customize and share various SQL formatting options by creating SQL formatting profiles	x	x	x
Context-sensitive DBMS Actions	DBMS actions, such as Extract and Drop, are available directly in the context menu of the appropriate tokens in the SQL editor	x	x	x
Syntax & Semantic Validation	Validate SQL files and flags all DBMS-specific parser violations or references to objects not found in the target database	x	x	x
Quick Fixes	Real-time parsing provides code quality suggestions for improving SQL performance as you type	x	x	x
SQL Debugging	Debug Java, step seamlessly into SQL (i.e. stored procedure) and back into Java again – true system-wide, round-trip debugging		x	x

DBMS Support

Rapid SQL:

- Firebird 1.5, 2.0
- IBM® DB2® for LUW 8.x and 9.x
- IBM® DB2® for OS/390 z/OS 8.x and 9.x
- InterBase 2007, 2009
- Microsoft® SQL Server 2000, 2005 and 2008
- MySQL 4.x
- Oracle® 8i, 9i, 10g and 11g
- Sybase® ASE 12.5 and 15.x
- Generic ODBC

Note: SQL Profiler is only available for installations of Oracle version 8.1.5 or higher. Debugging in Rapid SQL is only available for DB2 LUW, Oracle, MS SQL Server and Sybase.

Rapid SQL Developer:

- Firebird 2.0
- IBM DB2 for Linux, Unix, and Windows 8.0 - 9.5
- IBM DB2 for z/OS v8 and v9
- Interbase 2007 and 2009
- Microsoft SQL Server 2000, 2005, and 2008
- Oracle 8i - 11g
- Sybase 12.5 - 15.0.2
- Generic JDBC

Note: Debugging in Rapid SQL Developer Professional is only available for DB2, Oracle and Sybase

System Requirements

Rapid SQL:

- Windows 2003 (All editions), Windows 2003 R2 (All editions) and Windows XP (SP1, SP2, SP3) and Windows Vista (Ultimate and Business), Windows 7
- Support for 64-bit environments require installation of a 32-bit DBMS client
- 512 MB memory
- 512 MB disk space
- DBMS Client connectivity utilities
- For ODBC, an ODBC supported driver

Rapid SQL Developer:

- Microsoft Windows 2003, XP, Vista (32 bit), Windows 7, Red Hat Enterprise Linux 5.0 (32 bit), or SUSE Linux Enterprise Server 10 (32 bit)
- Sun Java 2 Standard Edition 5.0 Update 11 for Microsoft Windows or Linux: Sun Java 2 Standard Edition 5.0 Update 11 for Linux x86
- 1024 MB memory
- 500 MB disk space

Download a Free Trial at www.embarcadero.com

Corporate Headquarters | Embarcadero Technologies | 100 California Street, 12th Floor | San Francisco, CA 94111 | www.embarcadero.com | sales@embarcadero.com